



Agile PJD Development Sdn Bhd
Lot PT 15226, Persiaran Dutamas,
Off Jalan Duta, Sri Hartamas,
50480 Kuala Lumpur, Malaysia.
Tel : (+6) 03 2630 8880

DISCLAIMER: All information contained herein is subject to change without notification as may be required by the relevant authorities or developer's architect and cannot form part of an offer or contract. Whilst every care has been taken in providing this information, the owner, developer and managers cannot be held liable for variations. All illustrations and pictures are artist's impressions only. The items are subject to variations, modifications and substitutions as may be recommended by the Company's Architect and/or relevant Approving Authorities.
免责声明: 本广告文所有资讯已谨慎处理, 惟属情况作出修改, 同时不作任何销售承诺和合同附件。本行销售资料已经过仔细审核, 若有任何误差, 发展商及其代理将不负责。所有效果图及照片均属虚构。此广告所具备的资料可能自由发展商建筑师及/或有关当局的要求下, 而加以变化、修改及替代。

欲知详情, 请拨打 For Enquiries, Please Call
+603-2630 8880
www.agilemalaysia.com.my

• Developer's Licence No.: 14101-1/08-2017/0737(L), Validity: 25/08/2015 - 24/08/2017 • Advertising Permit: 14101-1/08-2017/0737(P), Validity: 25/08/2015 - 24/08/2017 • Developer: Agile PJD Development Sdn. Bhd. • Land Tenure: Freehold • Land Encumbrances: Public Bank Berhad • Expected Date of Completion: September 2019 • Selling Price: RM1,179,667 (min) - RM 6,621,613 (max) • Parcel Area: 3,162 sqft - 5,037 sqft • Total Units: 813 units • Type of Property: Condominium • Approving Authority: Dewan Bandaraya Kuala Lumpur (DBKL) • Building Plan Approval No.: BP T2 OSC 2015 1097 • Bumiputera Discount: 5% • Development License No.: 14101-1/08-2017/0737(L) • Validity: 25/08/2015 - 24/08/2017 • License No.: 14101-1/08-2017/0737(P) • Validity: 25/08/2015 - 24/08/2017 • Developer: Agile PJD Development Sdn. Bhd. • Land Tenure: Freehold • Land Encumbrances: Public Bank Berhad • Expected Date of Completion: September 2019 • Selling Price: RM1,179,667 (min) - RM 6,621,613 (max) • Parcel Area: 3,162 sqft - 5,037 sqft • Total Units: 813 units • Type of Property: Condominium • Approving Authority: Dewan Bandaraya Kuala Lumpur (DBKL) • Building Plan Approval No.: BP T2 OSC 2015 1097 • Bumiputera Discount: 5% • Development License No.: 14101-1/08-2017/0737(L) • Validity: 25/08/2015 - 24/08/2017 • License No.: 14101-1/08-2017/0737(P) • Validity: 25/08/2015 - 24/08/2017



Welcome to
Mont Kiara's
Finest

开启
满家乐
华丽生活

FREEHOLD
永久地契

Asia's Most Multicultural Destination

亚洲多元文化魅力



From KUALA LUMPUR
从吉隆坡



By Car
车程



By High-Speed Rail
高速快铁

Destination	By Car	By High-Speed Rail
To Singapore 至新加坡	3 Hours 30 Minutes / 3小时 30分钟	60 Minutes / 3小时 30分钟
To Melaka 至马六甲	1 Hours 30 Minutes / 1小时 30分钟	30 Minutes / 1小时 30分钟
To Johor Bahru 至柔佛	3 Hours / 3小时	45 Minutes / 45分钟
To Seremban 至芙蓉	1 Hours / 1小时	15 Minutes / 15分钟
To Penang 至槟城	4 Hours / 4小时	N/A 暂无



Malaysia at a Glance
马来西亚，让您钟情的城市

Be amazed by the uprising stature of Kuala Lumpur, the capital city of Malaysia. Here stands the country's most prominent icon, the Petronas Twin Towers, towering 451.9 metres (1,483 ft) tall. There are two mainlands (Peninsular Malaysia and Malaysian Borneo, separated by the South China Sea) that make the whole of Malaysia, which consists of 13 states, 3 federal territories and having Putrajaya as the house of the federal government.

马来西亚以西马半岛和东马组成，由南中国海隔开，共有13个州和3个联邦区域，联邦行政中心则位于布城。欣欣向荣的吉隆坡，是马来西亚首都，位处市中心高1483英尺（451.9米）的双峰塔，为著名国际地标。

TIME ZONE 时区
+8 GMT +16 U.S. Pacific

CLIMATE 气候
21°C +32°C

LANGUAGE 语言

Bahasa Malaysia, Chinese, and Tamil. English is widely used. 马来语、华语及淡米尔语。英语是使用最广泛的语言

RELIGION 宗教

Islam, Buddhism, Hinduism and Christian 伊斯兰教、佛教、兴度教及基督教

CAPITAL 首都



KUALA LUMPUR
吉隆坡

POPULATION 人口



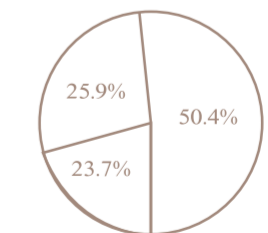
30 MILLION
3千万



GPS COORDINATES
全球定位系统
3.1333° N 101.7000° E



DISTANCE TO KLIA
距离吉隆坡国际机场
53KM



RACES 民族

50.4% Malay 巫裔
23.7% Chinese 华裔
11.0% Indigenous 土著
7.1% Indian 印度裔
7.8% other 其他

A GEM OF SOUTH EAST ASIA
耀眼的国土



ATTRACTIONS IN MONT KIARA 满家乐景点

- 1 IMMIGRATION OFFICE
- 2 MATRADE - MALAYSIAN TRADE
- 3 PLAZA MONT KIARA
- 4 SOLARIS DUTAMAS
- 5 KL GOLF & COUNTRY CLUB
- 6 BUKIT KIARA EQUESTRIAN PARK
- 7 KPGA GOLF CLUB
- 8 SRI HARTAMAS
- 9 DESA SRI HARTAMAS
- 10 DUTAMAS
- 11 DESA PARK CITY
- 12 KING'S PALACE

EXPRESSWAYS 高速公路

- 1 LDP EXPRESSWAY
- 2 NORTH-SOUTH EXPRESSWAY
- 3 SPRINT EXPRESSWAY
- 4 DUKE EXPRESSWAY

SCHOOLS 学院

- 1 TAYLORS COLLEGE SRI HARTAMAS
- 2 MONT KIARA INTERNATIONAL SCHOOL
- 3 GARDEN INTERNATIONAL SCHOOL
- 4 FRENCH INTERNATIONAL SCHOOL
- 5 DESA PARK CITY INTERNATIONAL SCHOOL

HOSPITALS 医疗

- 1 MONT KIARA SPECIALIST CENTER
- 2 PARK CITY MEDICAL CENTER

SHOPPING 购物

- 1 PUBLIKA SHOPPING MALL
- 2 1 MONT KIARA
- 3 HARTAMAS SHOPPING CENTER



ROYALE LAVISH FITOUT LOW ZONE
奢华尊贵 臻藏区

- 5 blocks
- 8 storeys
- 1 & 2 units per floor
- Semi furnished
- 2142sq. ft. - 5037sq.ft.

- 5 栋
- 8 楼层
- 每层1户 & 每层2户
- 配备特定家具
- 2142平方尺 - 5037平方尺

ELITE DUAL KEY MID ZONE
双钥匙 精锐区

- 2 blocks
- 18 storeys
- 2 units per floor
- Semi furnished
- 2131sq. ft.

- 2 栋
- 18 楼层
- 每层2户
- 配备特定家具
- 2131平方尺

PREMIUM QUALITY DESIGN HIGH ZONE
品质享受 高尚区

- 4 blocks
- 44 storeys
- 4 units per floor
- Semi furnished
- 1162sq. ft. - 2012sq. ft.

- 4 栋
- 44楼层
- 每层4户
- 配备特定家具
- 1162平方尺 - 2012平方尺



Welcome to the realm of Agile Mont Kiara. An exclusive high-end development with low density per acre in the verdant enclave of Mont Kiara. You'll be 'seeing green' as Agile is set amidst one of the greenest pastures of the upscale neighbourhood. Take a stroll with us into one of Mont Kiara's most prestigious addresses and get ready to be mesmerised.

满家乐为国际知名的低密度高尚住宅社区，完美融合都市生活而尽显尊荣地位。Agile Mont Kiara汇集优质生活特质，同时坐拥青葱翠绿的绿色景观，让您仿佛置身世外桃源，乐活于贵族领地。

- Dual Key concept
- Dual frontage
- Sky Club
- 5 Minute Walk To Publika Shopping Mall
- 4 International schools:
 - Mont Kiara International School
 - Garden International School
 - French International School
 - Desa Park City International School
- Located opposite Solaris Dutamas
- Largest Expatriate hub in Malaysia
- Sizes range from 1162sq. ft. - 5037sq. ft.

- 双钥匙概念
- 双阳台
- 空中会所
- 5分钟步行至Publika购物中心
- 4 所国际学校:
 - 满家乐国际学校
 - 吉隆坡花园国际学校
 - 法国国际学校
 - Desa Park City 国际学校
- 坐落于Solaris Dutamas对面
- 马来西亚最大国际生活社区
- 面积介于1162平方尺 - 5037平方尺

Low Density
低密度生活

65% Green Landscape
65%绿色景观

Sky Club Overlooking KL
空中会所尽览城市景观

SECURED
安全保障

Vehicle-free 无车区

ZONE

Get more here 尊享更多礼遇

Agile features a vehicle-free pedestrian walk, the first in Mont Kiara. A peace of mind for parents with kids. Allow your kids to roam freely in the vast landscaped gardens and parks within the compound.

满家乐首个人车分流设计，体验无车环境，行走更安全无阻。一个舒适安全的居家天地，父母与孩子奔放于广阔的花园及园林，尽情享受大自然及呼吸清新空气。



Vehicle
Separation zone
人车分流设计



6 Acres of
Beautiful Landscape
6英亩美化花园

Magnificent
Sky Club on the 29th floor
29楼无敌美景空中会所



1
Lavish
Facilities
奢华休闲设施

2
Stylish
Fitout
优质品牌设计

3
5-tier
Security
5层式保安系统

Welcome home 欢迎回家





Multipurpose hall 多功能厅

Enjoy a cup of tea with friends, or even host small private parties at the multipurpose hall. The hall offers a spacious outdoor deck overlooking the water feature.

宽敞的户外平台，可俯瞰特色水景，是您与亲朋好友聚会，或举办私人派对的绝佳场所。



A stunning view from the Sky Club 无敌美景的空中会所

Get a taste of the sky deck's beautiful scenery, overlooking Dutamas vicinity & the Matrade building.

极致的空中景观台可俯瞰周围高级社区马来西亚外贸发展局展览中心 (MECC)。



Chill Out 休闲之意

- Sky gymnasium
- 空中健身房
- Children's Fun Pool
- 儿童乐趣泳池
- Plunge pool
- 游泳池
- Aqua gymnasium
- 水上健身
- Sky cabana
- 空中休闲小屋
- Barbeque facilities
- 烧烤设施
- Sky suites
- 空中套房
- Viewing deck
- 景观台
- Games room
- 娱乐室
- Reading room
- 阅览室
- Prayer room
- 祈祷室



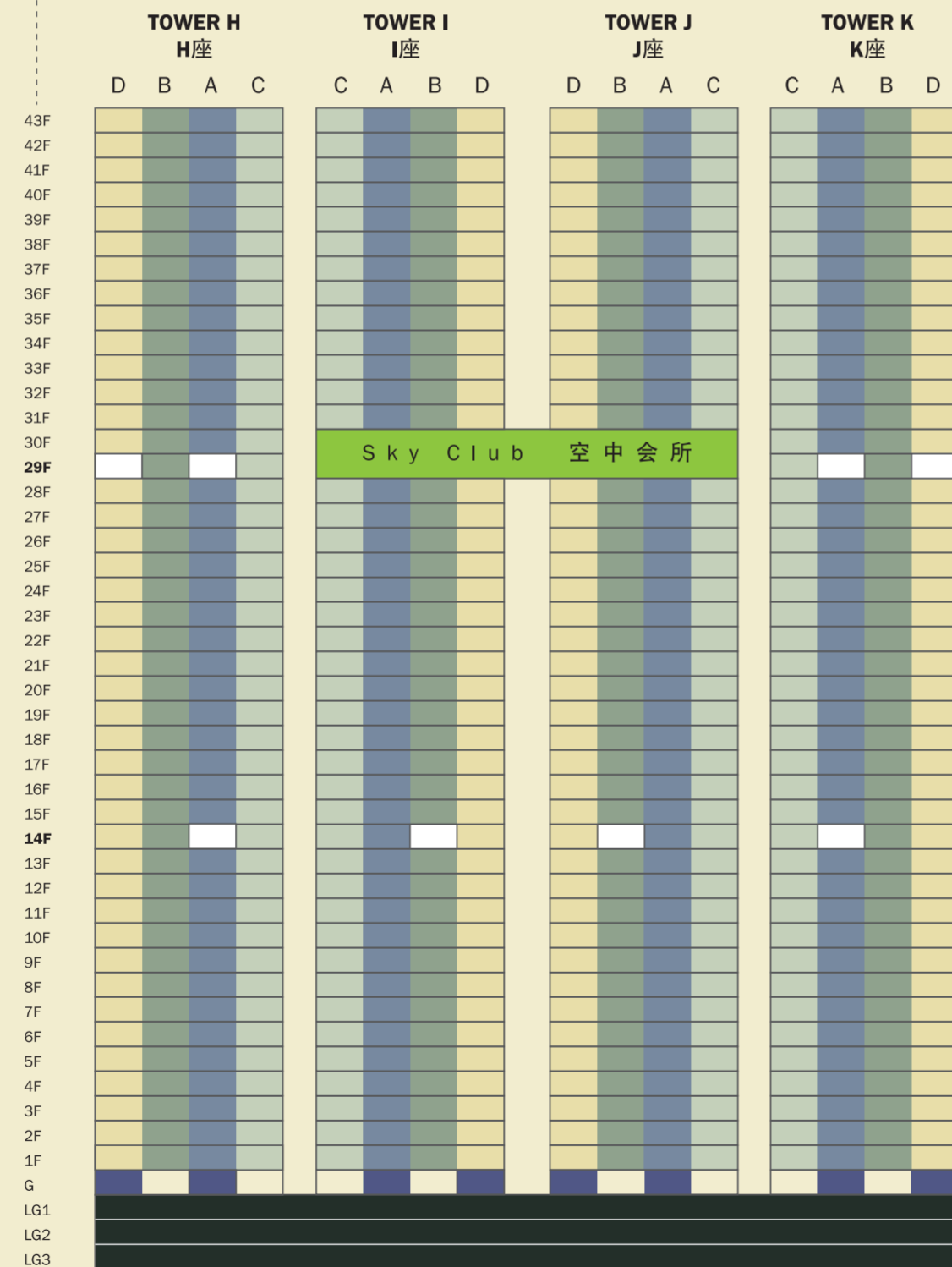
Section Plan -
Low, Mid &
High Zone
剖面图 - 臻藏区、
精锐区 & 高尚区

All renderings are subject to variations, modifications & substitutions as recommended by the Architect and/or directed by the Authorities.

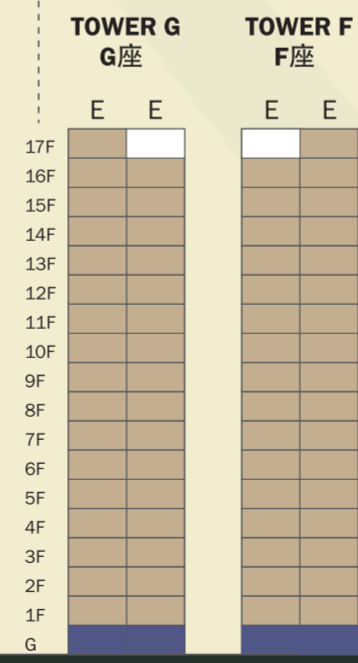
所有蓝图可能会由于建筑师及 / 或有关当局的要求下，而加以更改。

- Type A 户型A 3 Bedrooms 3卧室
- Type B 户型B 3 Bedrooms 3卧室
- Type C 户型C 3 Bedrooms 3卧室
- Type D 户型D 3+1 Bedrooms Dual Key 3+1卧室双钥匙
- Type E 户型E 3+1 Bedrooms Dual Key 3+1卧室双钥匙
- Type F 户型F 4 Bedrooms 4卧室
- Type G 户型G 4 Bedrooms 4卧室

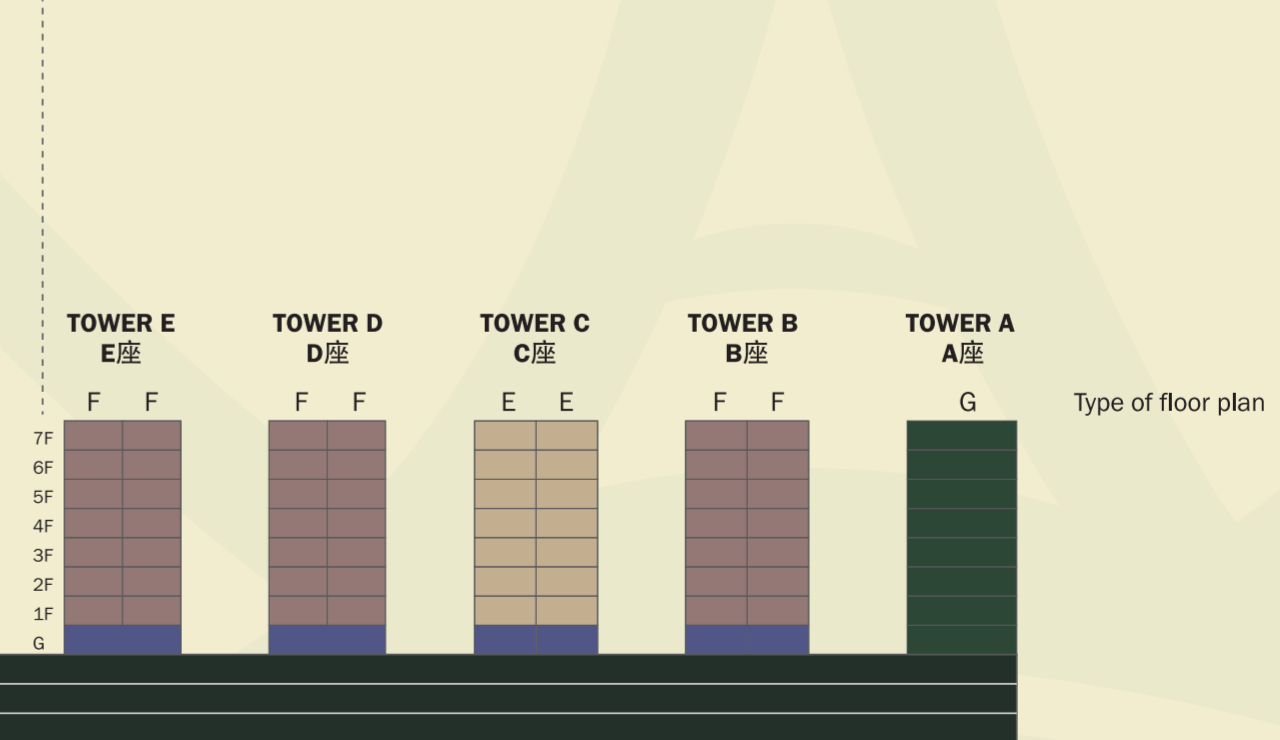
HIGH ZONE 高尚区 (Type 户型 A,B,C,D)



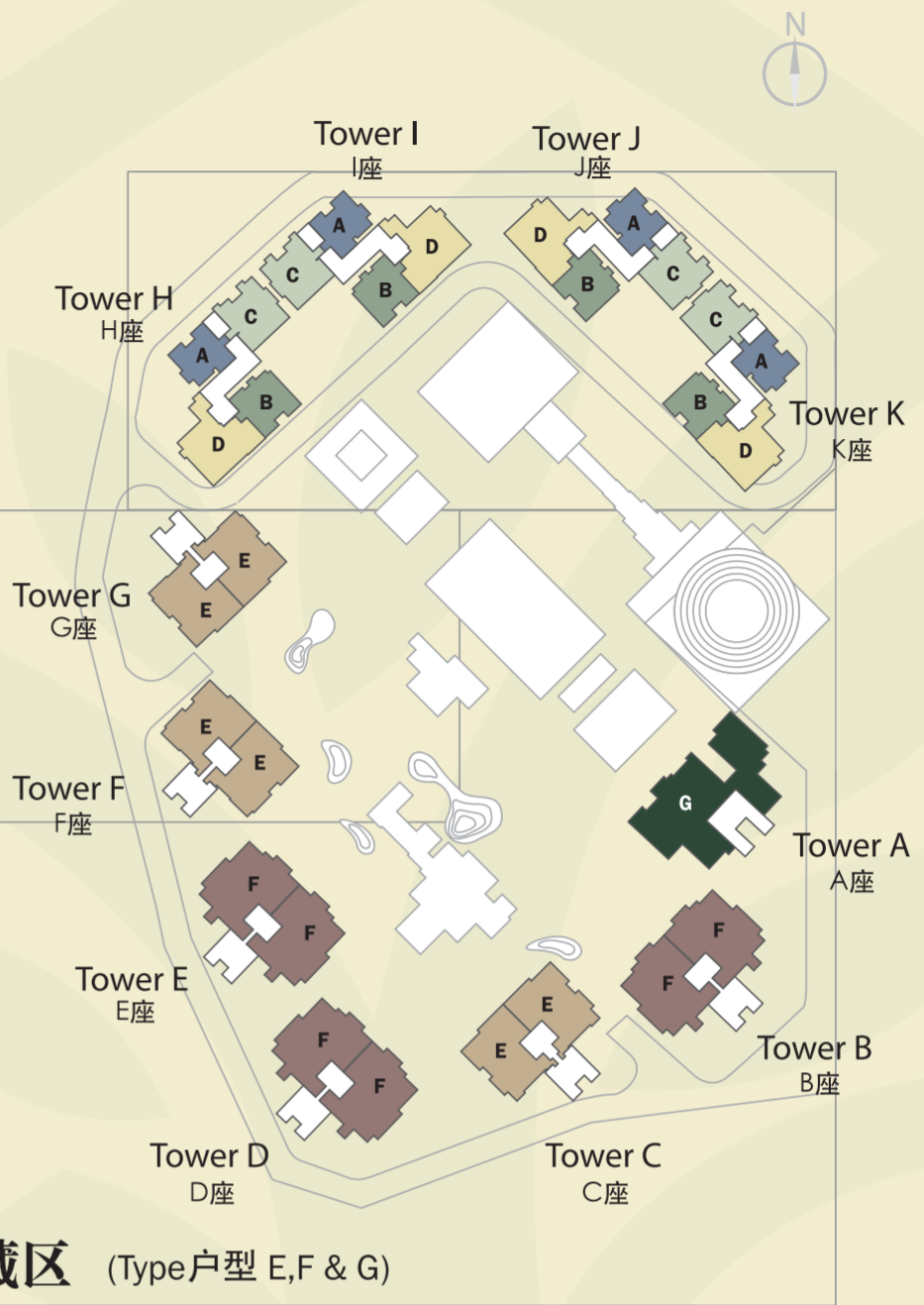
MID ZONE 精锐区 (Type 户型 E)



LOW ZONE 臻藏区 (Type 户型 E,F & G)



- Residential Car Parks 住户停车场
- Ground Floor units with Garden 花园底层单位
- Sky Club with facilities 空中会所与设施





The Charismatic Choice 承纳上流贵气

Enjoy the finer side of life with Agile's premium suites. The ideal home for adventurous and prestigious living. Come home to the luxurious and exceptional lifestyle of our premium suites. Introducing a 4 unit per floor layout for comfort and privacy.

Agile高尚套房，是您梦寐以求的理想家园。每层4户的套房设计，保障您的私隐，提供豪华及优质生活方式，为您带来无比舒适的居住享受。

Complimentary Fittings 附送设备

- Built-in Kitchen Cabinets Inclusive Of Sink, Faucet, Hobs, Oven, Cooker Hood and Kitchen Island. *(Depends On Unit Type)
嵌入式橱柜配备水槽、水龙头、煤气炉、烤箱、抽油烟机及厨房中岛。*（取决于单位户型）
- Built-in wardrobes in Master bedroom.
主卧室配备嵌入式衣柜。
- Video Intercom system in each unit.
每单位配备楼宇视频对讲系统。
- Centralised water heater.
中央热水系统。
- Air-conditioner (ducted and split-units)
空调（管道与分体式）



Master bedroom 主卧室



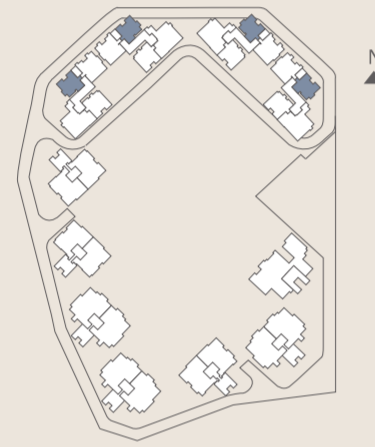
Living area 客厅

Typical Floor Plan - HIGH ZONE 标准层面图 - 高尚区

(TOWER H, TOWER I & TOWER J & TOWER K)
(H座、I座 & J座 & K座)

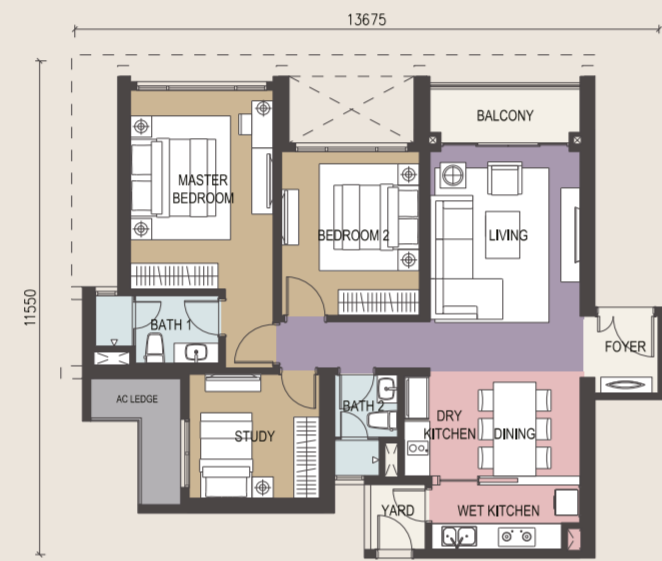
TYPE 户型 Aa1-Ac1, TYPE 户型 Aa2*-Ac2*

*Mirror Unit *镜面单位



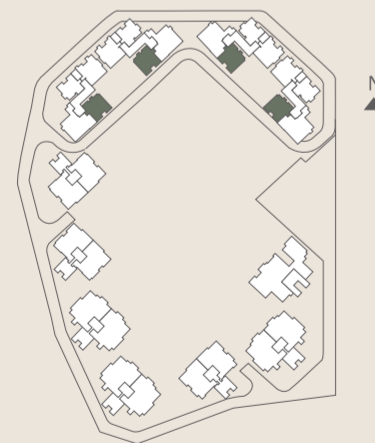
• 3 Bedrooms 3卧室

Parcel Area 地块面积: 1,162 sq. ft. (平方米)
Accessories Parcel Area 部分地块面积: 53 sq. ft. (平方米)



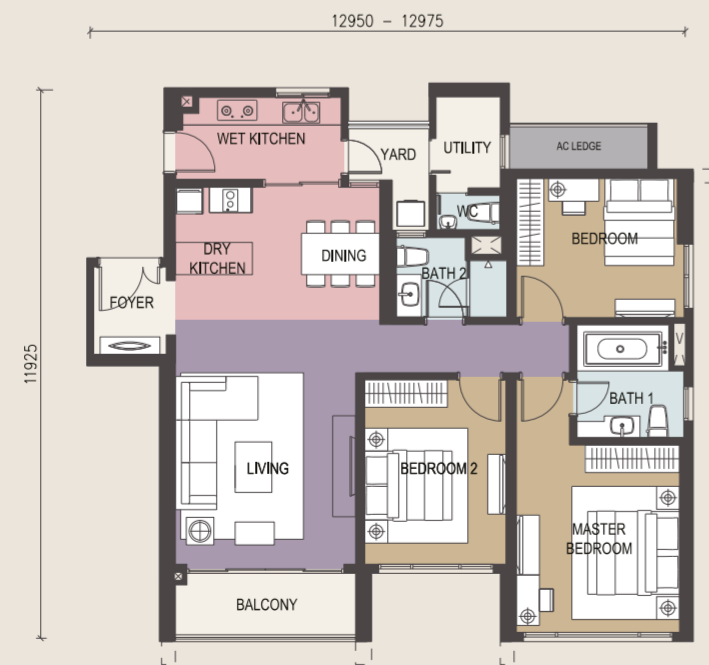
TYPE 户型 Ba1-Bc1, TYPE 户型 Ba2*-Bc2*

*Mirror Unit *镜面单位



• 3 Bedrooms 3卧室

Parcel Area 地块面积: 1,345 sq. ft. (平方米)
Accessories Parcel Area 部分地块面积: 32 sq. ft. (平方米)



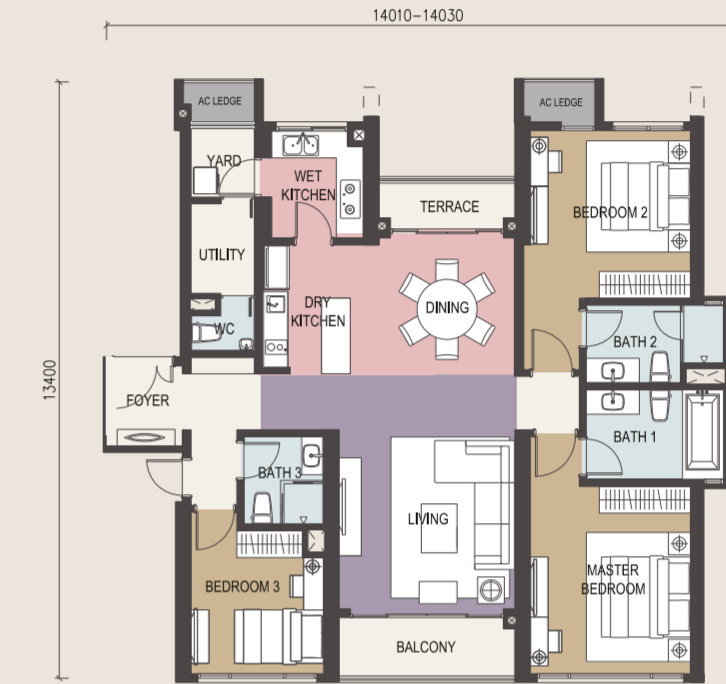
TYPE 户型 Ca1-Cc1, TYPE 户型 Ca2*-Cc2*

*Mirror Unit *镜面单位



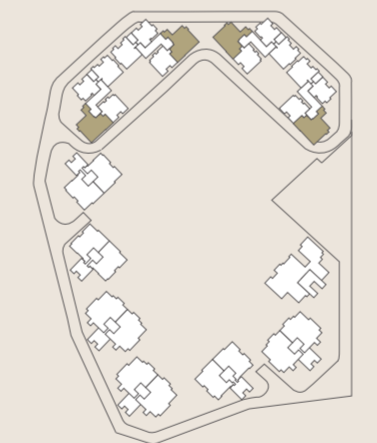
• 3 Bedrooms 3卧室
• Dual Frontage 双阳台

Parcel Area 地块面积: 1,560 sq. ft. (平方米)
Accessories Parcel Area 部分地块面积: 43 sq. ft. (平方米)



TYPE 户型 Da1-Dc1, TYPE 户型 Da2*-Dc2*

*Mirror Unit *镜面单位



• 3+1 Bedrooms, Dual Key unit 3+1卧室双钥匙单位
• Dual Frontage 双阳台

Parcel Area 地块面积: 2,012 sq. ft. (平方米)
Accessories Parcel Area 部分地块面积: 53 sq. ft. (平方米)





The extravagance of space
开创美好未来

A commodious home for the growing family. The Elite range of residences is perfect for just that. The spacious layout provides more space to all the rooms and common areas to comfortably accommodate the whole family.

精品套房提供无限的居住空间，适合家庭同堂欢聚。宽敞的舒适空间可供家人畅享天伦之乐，满足您的生活需求。



以上图片非交楼装修标准
 Image shown may vary from actual package

单位实际图
 Actual show unit photo

Master bedroom 主卧室

Complimentary Fittings 附送设备

- Built-in Kitchen Cabinets Inclusive Of Sink, Faucet, Hobs, Oven, Cooker Hood and Kitchen Island.*
 *(Depends On Unit Type)
 嵌入式橱柜配备水槽、水龙头、煤气炉、烤箱、抽油烟机及厨房中岛。* (取决于单位户型)
- Built-in wardrobes in Master bedroom.
 主卧室配备嵌入式衣柜。
- Video Intercom system in each unit.
 每单位配备楼宇视频对讲系统。
- Centralised water heater.
 中央热水系统。
- Air-conditioner (ducted and split-units)
 空调 (管道与分体式)



以上图片非交楼装修标准
 Image shown may vary from actual package

单位实际图
 Actual show unit photo

Studio unit (dual-key)
 套房单位 (双钥匙)

Typical Floor Plan - MID ZONE 标准层面图-精锐区

(TOWER F & G)
(F座 & G座)

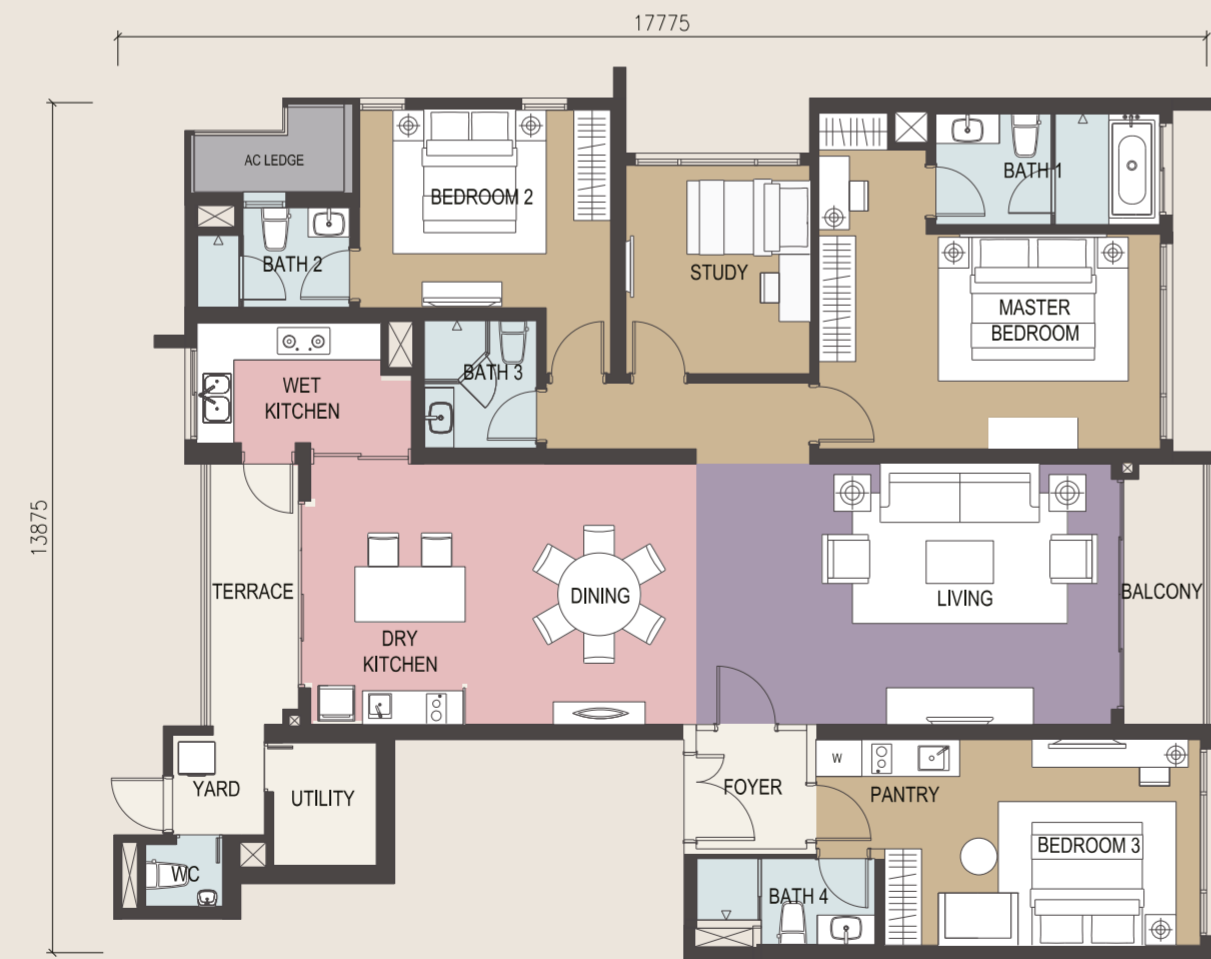
TYPE 户型 Eb1 & Eb2*

*Mirror Unit *镜面单位

- 3+1 Bedrooms, Dual Key unit 3+1卧室双钥匙单位
- Dual Frontage 双阳台

Parcel Area 地块面积: 2,131 sq. ft. (平方尺)

Accessories Parcel Area 部分地块面积: 32 sq. ft. (平方尺)



以上图片非交楼装修标准
Image shown may vary from
actual package

单位实际图
Actual show unit photo

Dining & kitchen area
饭厅与厨房

THE ELITE ZONE 精锐楼层

This layout showcases 2 units per floor, giving added privacy & peace of mind to occupants.

楼层设计展示了每层2个单位，极具私隐与安全性，
打造宁静与设备齐全的舒适生活。

All renderings are subject to variations, modifications & substitutions as recommended by the Architect and/or directed by the Authorities.
所有蓝图可能会由于建筑师及/或有关当局的要求下，而加以更改。



ROYALE SUITES . LOW ZONE
奢华套房 - 臻藏区

2 1 4 2 s q f t (平 方 尺) - 5 0 3 7 s q f t (平 方 尺)

Fit for Royalty 专属尊贵的您

The cream of the crop of Agile Mont Kiara, these Royale Suites are a showcase of the ultimate upscale lifestyle in the heart of Mont Kiara.

尊贵的奢华套房，于满家乐国际社区犹如凤毛麟角，是上流阶级专属的至臻住宅品，能完美演绎现代极致生活。



Master bedroom (type F) 主卧室 (户型F)



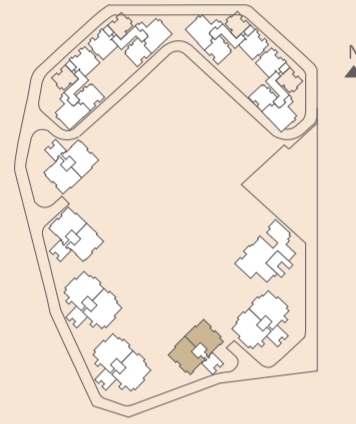
Dining area (type F) 饭厅 (户型F)

Complimentary Fittings 附送设备

- Built-in Kitchen Cabinets Inclusive Of Sink, Faucet, Hobs, Oven, Cooker Hood and Kitchen Island.*
*(Depends On Unit Type)
嵌入式橱柜配备水槽、水龙头、煤气炉、烤箱、抽油烟机及厨房中岛。* (取决于单位户型)
- Built-in wardrobes in Master bedroom.
主卧室配备嵌入式衣柜。
- Private pool. *(Applicable to Type G only)
私人泳池。* (仅户型G)
- Video Intercom system in each unit.
每单位配备楼宇视频对讲系统。
- Centralised water heater.
中央热水系统。
- Air-conditioner (ducted type).
空调 (管道式)。

Typical Floor Plan - LOW ZONE 标准层面图-臻藏区

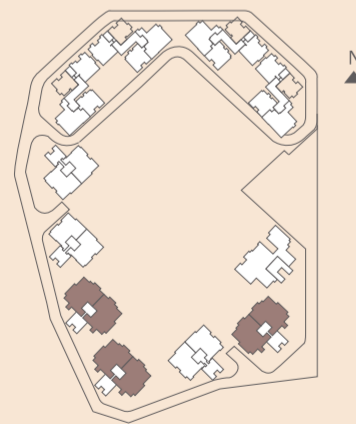
(Tower C)
(C座)
TYPE 户型 Ea1 & Ea2*
*Mirror Unit *镜面单位



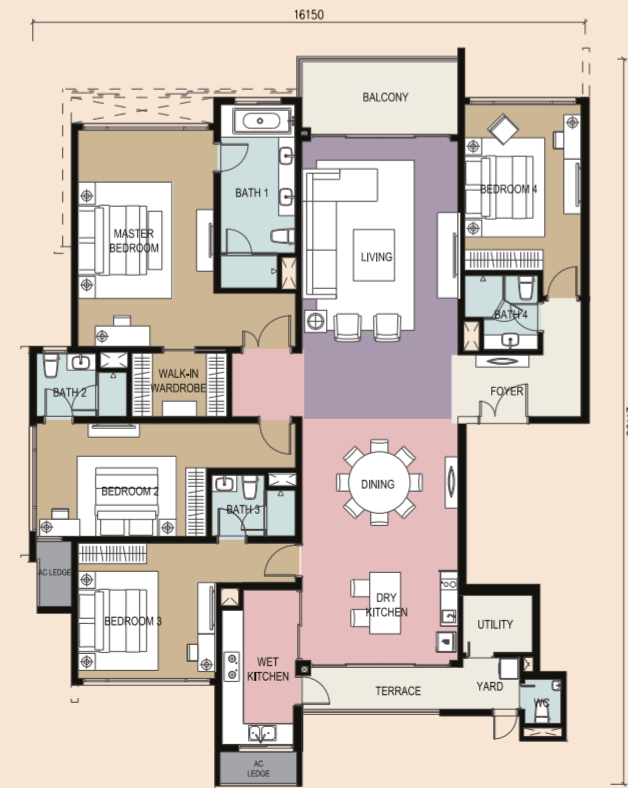
• 3+1 Bedrooms, Dual Key unit 3+1卧室双钥匙单位
• Dual Frontage 双阳台
Parcel Area 地块面积: 2,142 sq. ft. (平方米)
Accessories Parcel Area 部分地块面积: 32 sq. ft. (平方米)



(Tower B, Tower D & Tower E)
(B座、D座&E座)
TYPE 户型 F1 & F2*
*Mirror Unit *镜面单位



• 4 Bedrooms 4卧室
• Dual Frontage 双阳台
Parcel Area 地块面积: 2,723 sq. ft. (平方米)
Accessories Parcel Area 部分地块面积: 43 sq. ft. (平方米)

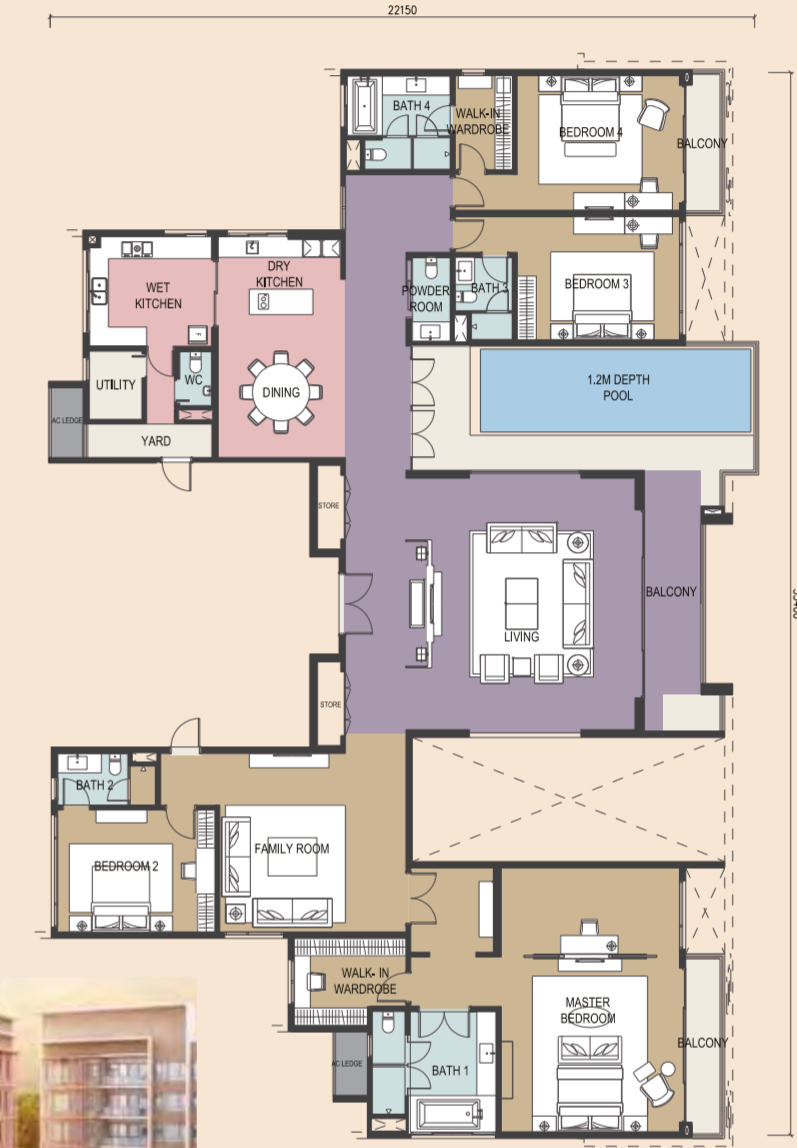


(Tower A)
(A座)
TYPE 户型 G
*Mirror Unit *镜面单位



• 4 Bedrooms 4卧室
• Dual Frontage 双阳台

Parcel Area 地块面积: 5,037 sq. ft. (平方米)
Accessories Parcel Area 部分地块面积: 53 sq. ft. (平方米)



SKY BUNGALOWS WITH PRIVATE POOL
配有私人泳池的空中套房



Private Pool
私人泳池

Be amongst the regal 7 to be treated to our TYPE G, ROYALE SUITES, the most prestigious type of all. Pamper yourself in the space and privacy of our low rise, 1 unit per floor type. Living in a sky bungalow has no compromise with our luxurious fitout.

奢华套房户型G, 仅有尊贵七层而设。高端的空中套房, 配备完美精致的装备, 设计单层单户打造低密度及高隐私, 同时拥宽敞空间, 这是最负盛名的户型。



以上图片非交楼装修标准
Image shown may vary from
actual package

单位实景图
Actual show unit photo

SPECIFICATIONS 规格

STRUCTURE 建筑结构	:	REINFORCED CONCRETE FRAMEWORK 钢筋混凝土结构
WALL 墙壁	:	BRICKS / REINFORCED CONCRETE WALL 砖 / 钢筋混凝土墙
ROOFING COVERING 屋顶	:	REINFORCED CONCRETE FLAT ROOF 钢筋混凝土屋顶
CEILING 天花板	:	SKIM COAT / PLASTER BOARD WITH EMULSION PAINT 石粉打磨 / 乳胶漆石膏板
WINDOW 窗	:	ALUMINIUM FRAMED WINDOW 铝合金框窗

DOORS 门

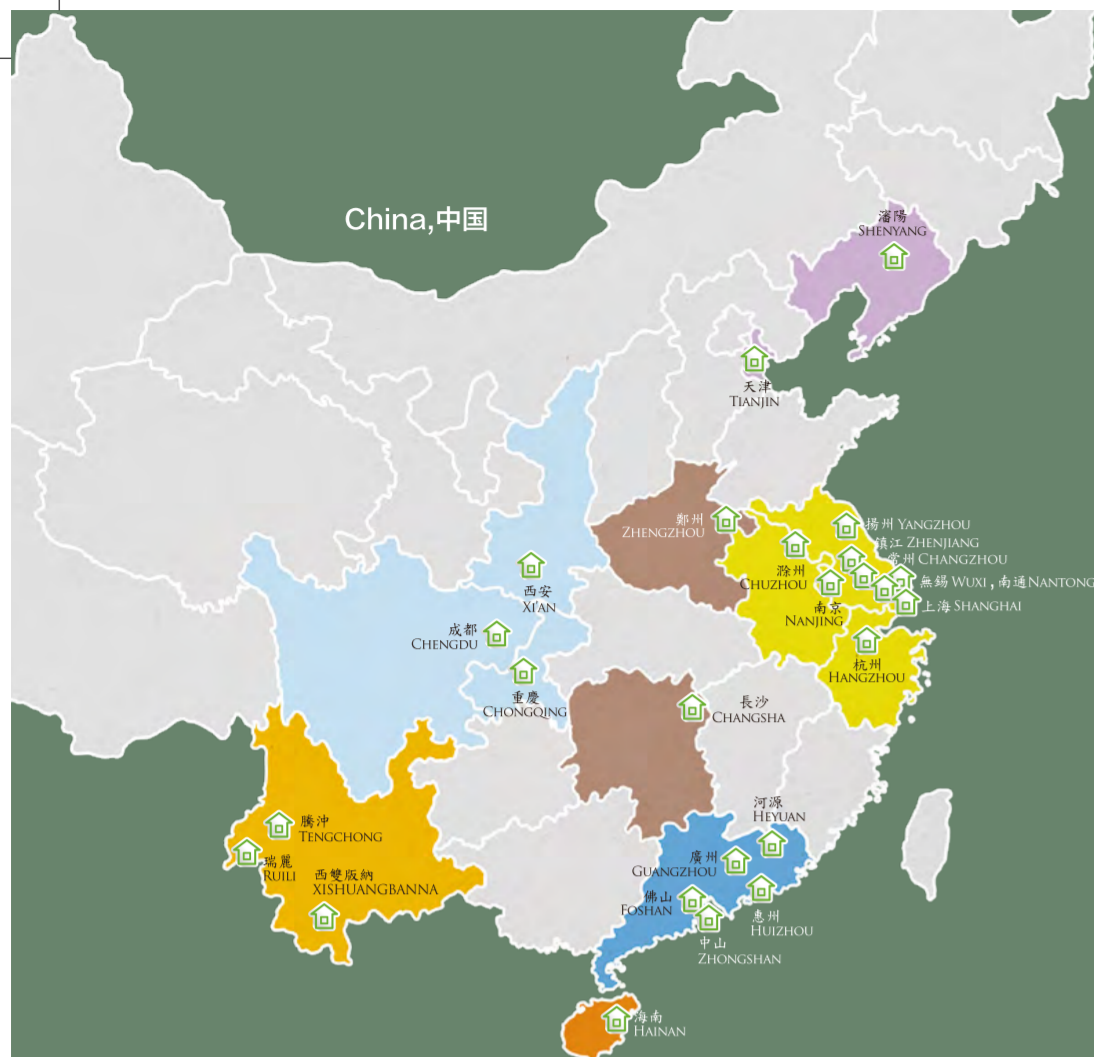
MAIN ENTRANCE DOOR 入口门	:	APPROVED FIRE-RATED TIMBER PANEL DOOR 标准防火木材板门
BEDROOM, BATHROOM AND STUDY DOORS 卧室、浴室和书房门	:	QUALITY TIMBER DOOR 优质木材板门
BALCONY AND TERRACE 阳台和露台	:	ALUMINIUM FRAMED SLIDING GLASS DOOR 铝合金框滑动玻璃门
IRONMONGERY 小五金器具	:	QUALITY LOCKSET 优质锁具

WALL FINISHES 墙壁

FOYER / LIVING / DINING / BEDROOM / STUDY 门厅 / 客厅 / 饭厅 / 卧室 / 书房	:	SKIM COAT / CEMENT PLASTER AND PAINT 石粉打磨 / 沙浆抹灰及油漆
BATHROOMS 浴室	:	PORCELAIN TILES / STONES (WHERE APPLICABLE) 铺砌釉面砖 / 石材 (限制区域)
DRY AND WET KITCHEN 中、西厨房	:	PORCELAIN TILES (WHERE APPLICABLE) 铺砌釉面砖 (限制区域)
OTHERS 其他	:	SKIM COAT / CEMENT PLASTER AND PAINT 石粉打磨 / 沙浆抹灰及油漆

FLOOR FINISHES 地板

LIVING / DINING / KITCHEN 客厅 / 饭厅 / 厨房	:	PORCELAIN TILES 铺砌釉面砖
BEDROOMS 卧室	:	TIMBER STRIP 实木地板
BATHROOM 浴室	:	PORCELAIN TILES / STONES (WHERE APPLICABLE) 铺砌釉面砖 / 石材 (限制区域)
BALCONY / TERRACE / YARD / UTILITY 阳台 / 露台 / 院子 / 设施	:	PORCELAIN TILES 铺砌釉面砖
SANITARY AND PLUMBING FITTINGS 卫生洁具装置	:	QUALITY SANITARY WARES AND FITTINGS 优质卫生洁具与配件



An award winning developer with an astounding track record from multiple developments throughout China.

Vision, Enthusiasm, Developing future together.

Setting a new milestone in Mont Kiara, Malaysia. The first step to building an International Portfolio.

一个屡获殊荣与多元发展的中国发展商。

远见、心建、共建未来。

跨足马来西亚的首个发展计划 满家乐再创里程碑。

Malaysia, 马来西亚



AGILE
MONT KIARA
malaysia 马来西亚



- 2013 Annual Property Oscars "Chinese Real Estate Top Ten Brand Leaders" "2013年度楼市奥斯卡" 中国地产十大领袖品牌
- 2012 Top 30 Chinese Real Estate Listed Companies (Real Estate G30) 2012中国房地产上市企业30强(地产G30)
- Finance Asia China Top Ten Best Investor Relations 亚洲金融—中国十大最佳投资者关系
- (Economic Digest) China Top Property Developer 《经济一周》中国杰出地产商
- (Asia Week) Best Blue-Chip Company Awards, Sole Winner of The Year 2012 (Asia Week) 《亚洲周刊》最佳蓝筹公司—2012年度唯一赢家
- Comprehensive Strength of Chinese Real Estate Listed Companies 2011 (Ranked 9th) 中国房地产上市公司综合实力榜第九名
- Top 10 Chinese Real Estate Companies Listed in Hong Kong in Comprehensive Strength 中国房地产价值榜“中资港股综合价值TOP10”
- Forbes Asia Fabulous 50 - The Best Asia Pacific's Biggest Listed Companies 福布斯亚洲50最佳—亚太区最佳上市企业



CORPORATE SPIRIT

- VISION** Agile is committed to the healthy, stable and sustainable development. To achieve complete clients satisfaction, Agile strives to provide high quality, innovative products and services.
- ENTHUSIASM** Agile values highly the contributions of every staff, and sincerely collaborates with all partners to build dream homes for the public.
- DEVELOPING FUTURE TOGETHER** Agile shoulders its Corporate Social Responsibility by contributing to the "harmonious community", and realising our vision for the future.

SUSTAINABLE DEVELOPMENT
Agile takes environmental protection seriously at every stage of projects implementation, to ensure the harmonious interaction with the environment.

- Formulating feasible environmental protection policies
- Implementing relevant green planning and designs
- Complying with regulators' guidelines for energy saving
- Procuring environmental-friendly construction materials
- Reducing unnecessary energy consumption

ABOUT US
Agile Property Holdings Limited (Stock Code: 3383) is a leading China-based property developer, with extensive presence in hotel operations, property investment and property management industries. The shares of Agile have been listed on the Main Board of The Hong Kong Stock Exchange since 2005.

In line the corporate spirit of "Develop Our Future with Vision and Enthusiasm", Agile vigorously upholds the human-oriented architectural concepts and is eagerly pursuing the goals of high quality living environment and harmonious community.

Agile pays much attention on each stage of property development, from preparation, planning, development to property management. Our commitment to quality, innovation, practical design and sustainable development has earned us praises from the market.

Agile currently owns a diversified portfolio of over 90 projects across China, including in Guangzhou, Zhongshan, Foshan, Shanghai, Nanjing, Yangzhou, Wuxi, Hangzhou, Ningbo, Chengdu, Xi'an, Chongqing, Zhengzhou, Hainan, Yunnan, Shenyang, Tianjin and beyond.

MILESTONES

PHASE I — A well-known developer in Zhongshan | **PHASE II — A well-known developer in Guangdong Province** | **PHASE III — A well-known nationwide property developer**

PHASE IV — One of the most competitive property developers | **PHASE III — A well-known nationwide property developer**

1989
• Dynasty Furniture Ltd. founded and laid the foundation of Agile

1992-99
• Developed Agile Garden Zhongshan and successfully established Agile brand in Hong Kong and Macau
• Introduced Hong Kong style of property management to Agile's projects
• Accredited with ISO9000

2000-04
• Successfully entered and came first in sales in property markets of Zhongshan, Huzhou, Nanhai, Guangzhou, and Panyu, thus being awarded the National First Class Property Developer

2005
• Listed on the Main Board of The Hong Kong Stock Exchange
• Held 18 projects by the end of the year

2006
• Expanded business into Nanjing, Heyuan, Daohong, Chengdu, Hainan, Huizhou, Sanshui, Xi'an, etc.
• Held 45 projects by the end of the year

2007
• Agile Garden Chengdu, the first project established outside the Guangdong Province, was launched with splendid sales recorded
• Held 51 projects by the end of the year

2008
• Agile Garden Nanjing was launched and became the local sales champion
• Engaged into a strategic cooperation with Morgan Stanley, a world-renowned institutional investor, to jointly develop Hainan Clearwater Bay
• Held 53 projects by the end of the year

2013
• Agile Metropolis Xiqiao, Agile Manhattan Hill Foshan, Agile Peninsula Sanshui, Agile Pure Moon Bay Hainan, Agile Cambridgeshire Zhongshan, The Territory Nanjing, Agile International Garden Ruili, Agile Eden Yunnan, Agile Earl Mansion Panyu and more were launched
• Expanded tourism property business into Tengchong, Ruili and Xishuangbanna of Yunnan Province
• Grand opening of Raffles Hainan and Sheraton Egret Lake Resort Huizhou
• Held 90 projects by the end of the year

2012
• Agile Montblanc Xi'an, Flowing Garden Conghua, Magnificence Nanjing, Royal Residence Zhongshan, Agile Garden Shenyang, New Legend Zhongshan and Beautiful Lake Zhongshan were launched for sale
• Agile International Plaza Shanghai was launched
• Agile moved the headquarters to Guangzhou International Finance Centre
• Held 74 projects by the end of the year

2011
• Agile Linghui Huadu, Tianjin Jinnan New City, Agile Seven Mile Sea Guangzhou, Gorgeous Days Panyu, Imperial Palace Nanhai, Agile Jardin Lecong, Agile Yorkshire Zhongshan and more were launched
• Grand opening of Shanghai Marriott Hotel City Centre, Agile's first 5-star international hotel
• Moody's Investors Service, Inc. raised the credit rating on Agile and its bond to "Baa2" with a "Stable" outlook, one of the best in the industry
• Agile's trademark was accredited as "China's Well-known Trademark" by State Administration for Industry and Commerce of the PRC
• Held 70 projects by the end of the year

2010
• Agile Uptown Huadu, Agile International Garden Chongqing, Agile Royal Mount Zhongshan, Agile Xiyue Zhongshan, and Guangzhou Asian Games City Project were launched and all recorded remarkable sales
• Participated in the development of Tianjin Jinnan New City
• Held 68 projects by the end of the year

2009
• Hainan Clearwater Bay, Agile Cambridgeshire Guangzhou, Agile Garden Xi'an, and Agile Garden Shunde were launched for sale
• Entered into hotel management agreements with 5 world-renowned hotel groups
• Expanded business into cities including Changzhou and Shenyang, as well as participated in the development of Guangzhou Asian Games City Project
• Held 64 projects by the end of the year